

Cloud9 Quick Start Guide

Contents

1. Create Merchant Account on Cloud9's website.....	2
1.1 Logon Cloud9's website as Dealer Admin	2
1.2 Create Chain (Optional).....	2
1.3 Create Store.....	3
1.4 Create Merchant Account	6
2. Configure CreditLine.....	12
2.1 Install CreditLine.....	12
2.2 CreditLine Settlement, Authorization and Connection Configuration	12
2.3 CreditLine Business Configuration.....	18
3. Integrate your POS with CreditLine as before.....	22
4. Configure and Run the Cloud9's PDC(Payment Device Controller).....	22
5. Check the Report.....	24
6. The operations of the transactions on website.....	24

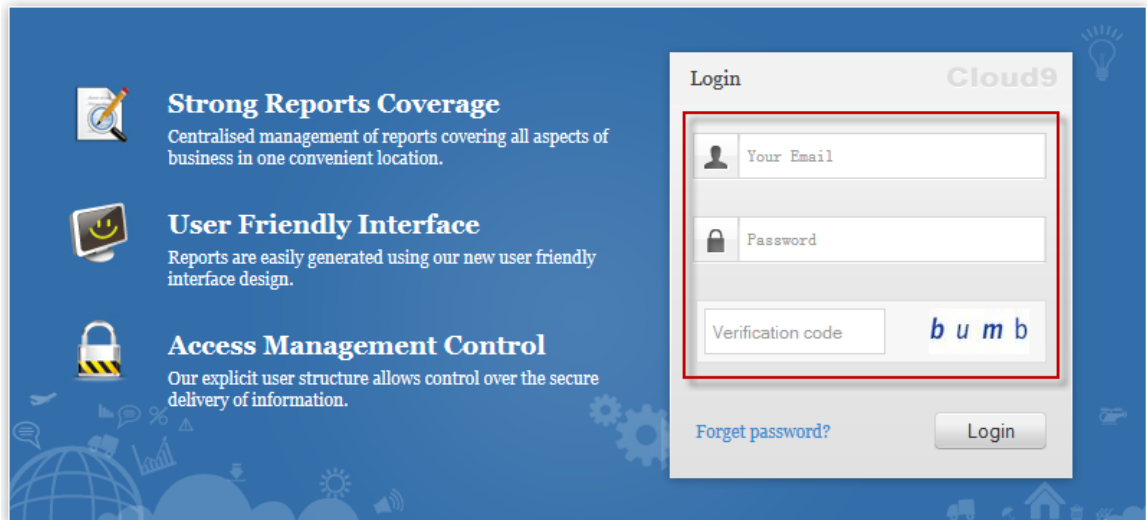
1. Create Merchant Account on Cloud9's website

1.1 Logon Cloud9's website as Dealer Admin

Click <https://www.c9pg.com/cloud9/web/>

Please input Your Email, Password, and Verification Code, then click Login button.

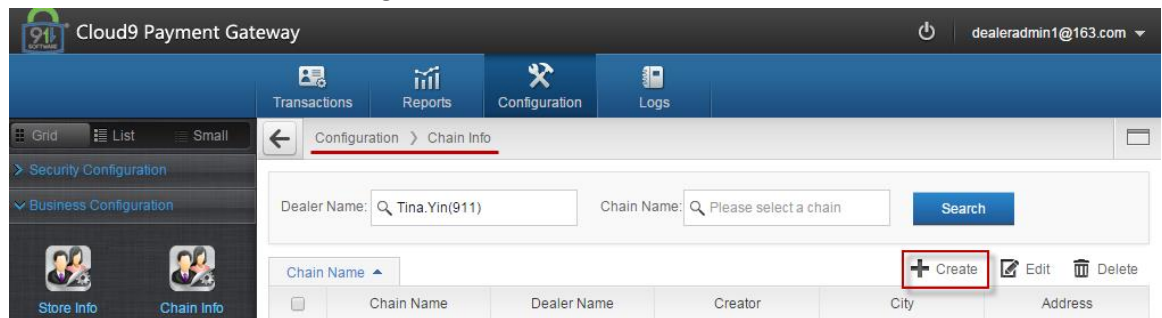
If your do Not have account, please contact 911software's support.



1.2 Create Chain (Optional)

1.2.1 Navigate to Configuration->Business Configuration->Chain Info

1.2.2 Click Create icon on the right



1.2.3 Please input the Chain Name, select the Dealer as mandatory fields. Please input the Address, Suite, City, State, Zip Code, Contact, Phone and Notes as optional fields. Then click Submit button.

Cloud9 Payment Gateway

Transactions | Reports | Configuration | Logs

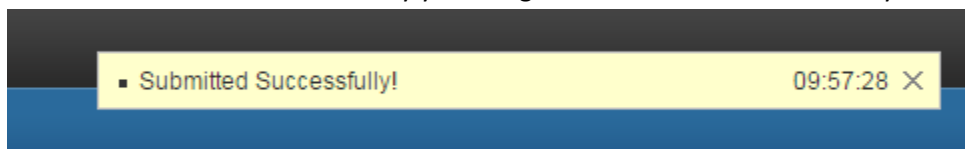
Grid | List | Small

Configuration > Chain Info > Add Chain

* Chain Name	Fast Food Restaurant
* Dealer	Tina.Yin(911)
Address	1730 S Federal HWY
Suite	#389
City	BOCA RATON
State	FL
Zip Code	33481
Contact	Jim Min
Phone	561-392-9606
Notes	If you have any question please contact us.

Submit | Cancel

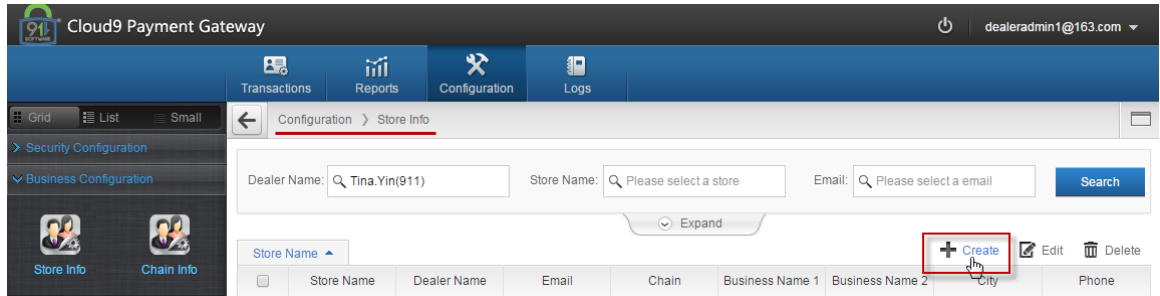
If the Chain is created successfully you will get the "Submitted Successfully" message.



1.3 Create Store

1.3.1 Navigate to Configuration->Business Configuration->Store Info

1.3.2 Click Create icon on the right



1.3.3 Please input the Store Name, Email, City and State, select the Dealer as mandatory fields. Please select Chain, input Business Name 1, Business Name 2, Address, Suite, Zip Code, Contact, Phone, and Notes as optional fields. Then click Submit button.



* Store Name	<input type="text" value="Store11"/>
* Email	<input type="text" value="store11@911software.com"/>
* Dealer	<input type="text" value="Tina.Yin(911)"/>
Chain	<input type="text" value="K.F.C"/>
Business Name 1	<input type="text" value="HPS TEST"/>
Business Name 2	<input type="text" value="TEST"/>
Address	<input type="text" value="1730 S Federal HWY"/>
Suite	<input type="text" value="#389"/>
* City	<input type="text" value="BOCA RATON"/>
* State	<input type="text" value="FL"/>
Zip Code	<input type="text" value="33481"/>
Contact	<input type="text"/>
Phone	<input type="text" value="561-392-9606"/>
Notes	<input type="text"/>

Submit

Cancel

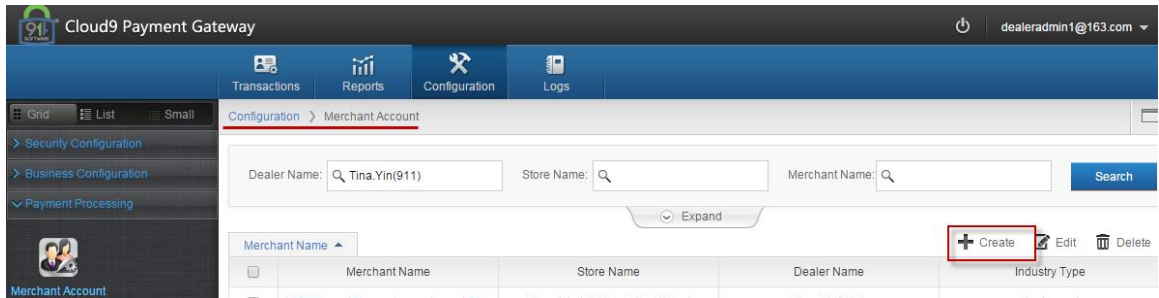
If the Store is created successfully you will get the “Submitted Successfully” message.



1.4 Create Merchant Account

1.4.1 Navigate to Configuration-> Payment Processing -> Merchant Account

1.4.2 Click Create icon on the right.



1.4.3 Click OK button on the popup page.




1.4.4 Please input the Merchant Name, select the Store, Industry Type and Credit Processor. Then click Processor Config button.

← Configuration > Merchant Account

Processor Config

1

* Merchant Name	<input type="text" value="Merchant111 Using USAT as Processor"/>
* Dealer	<input type="text" value="Tina.Yin(911)"/>
* Store	<input type="text" value="Store11ForTina"/>
* Industry Type	<input type="text" value="Retail"/>
* Credit Processor	<input type="text" value="USAT"/> <input type="button" value="Processor Config"/> 

1.4.5 Please enter the configuration info from USAT(the selected Processor). Then click Submit.

If you do NOT have the configuration info, please contact USAT(the selected Processor)'s support.

processor × Close

Basic Information	
Name	USAT
Capture	Host Capture
Support Industry	Retail
E2E Encryption	Not available

Detailed Information	
* User Name	9112...User
* Serial Number	K...001
* Password	W...IT9

1.4.6 If you got the Submitted Successfully message, then click Submit button under the website.

eway

Submitted Successfully!

Transactions Reports Configuration Logs Billing

Configuration > Merchant Account

Processor Config Card Config

1 2

* Merchant Name	Merchant111 Using USAT as Processor	
* Dealer	Tina.Yin(911)	
* Store	Store11ForTina	
* Industry Type	Retail	
* Credit Processor	USAT	Processor Config
Debit Processor	<input checked="" type="checkbox"/> Same As Credit	
EBT Processor	<input checked="" type="checkbox"/> Same As Credit	
Prepaid Processor	<input checked="" type="checkbox"/> Same As Credit	
Gift Processor	<input checked="" type="checkbox"/> Same As Credit	
Current Credit	1800.00	

Submit Cancel

1.4.7 Click Next.

Processor Config



Merchant Name	Merchant111 Using USAT as Processor
Industry Type	Retail
Credit Processor	USAT
Debit Processor	USAT
EBT Processor	USAT
Prepaid Processor	USAT
Gift Processor	USAT

[Next](#) 

1.4.8 Please configure your accepted card type, then click Next.

Configuration > Cards Config

Processor Config 1 Card Config 2 Terminal Config 3

Serial#	Card Type	Accepted
1	VISA	YES
2	MasterCard	YES
3	AmericanExpress	YES
4	Discover/NOVUS	YES
5	DinersClub	YES
6	JCB	YES
7	EBT CashBenefit	NO
8	EBT FoodStamp	NO
9	Debit Card	NO
10	Prepaid Card	YES
11	Gift Card	YES

Back Next

1.4.9 Please click Create icon on the right.

Configuration > Terminal Management

Processor Config 1 Card Config 2 Terminal Config 3

+ Create

Edit	Delete	Serial#	Merchant Name	Gateway-MID	Gateway-TID	Device Number

Back Finish

1.4.10 Please input the Device Number then click Submit button.

If you have multiple POS terminal, you can create multiple Terminal with different Device Number, such as 001~009.

Add Terminal ✕ Close

Basic Information

* Device Number:

1.4.11 Please record the Gateway-MID and Gateway-TID, then click Finish button. The Gateway-MID and Gateway-TID is used to configure CreditLine.

Configuration > Terminal Management

Processor Config Card Config Terminal Config

1 ————— 2 ————— 3

Edit	Delete	Serial#	Merchant Name	Gateway-MID	Gateway-TID	Device Number
<input checked="" type="checkbox"/>	<input type="checkbox"/>	1	Merchant1 Using USAT as Processor	1000000035	GT0000000186	DeviceNo1

+ Create

Back Finish

2. Configure CreditLine.

2.1 Install CreditLine

Please download *CreditLine4.1.3Build1186.6SP3.exe* or newer version.

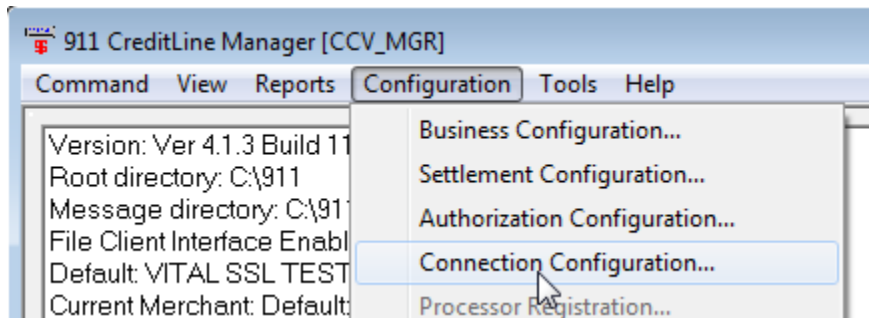
You can download the latest version on 911software's website:

<https://www.911software.com/downloads/>

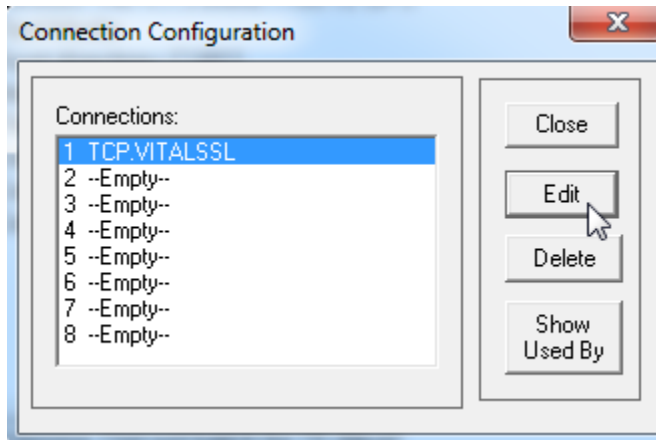
Install *CreditLine4.1.3Build1186.6SP3.exe*

2.2 CreditLine Settlement, Authorization and Connection Configuration

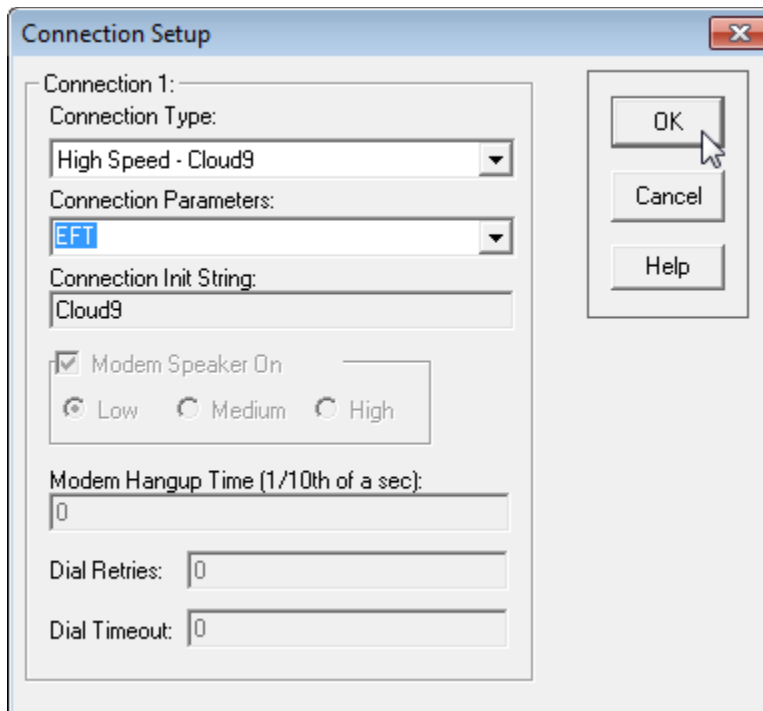
2.2.1 Please logon 911 CreditLine Manager then navigate to Configuration->Connection Configuration.



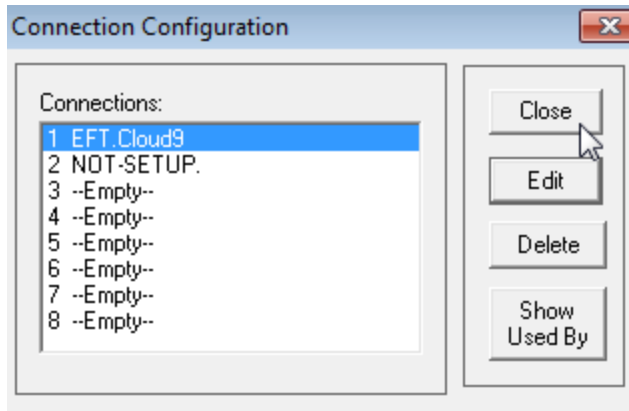
2.2.2 Click Edit.



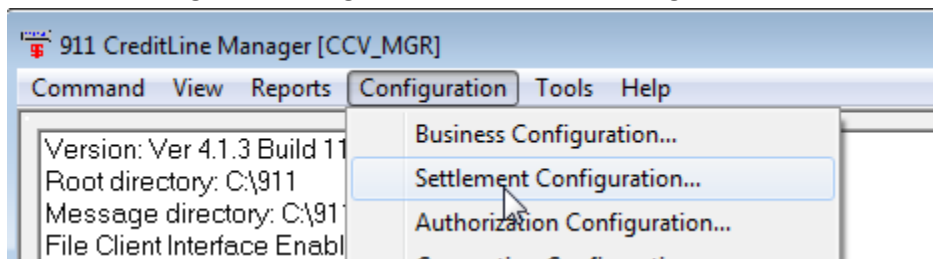
2.2.3 Select High Speed-Cloud9 as Connection type, select EFT as Connection Parameters, then click OK.



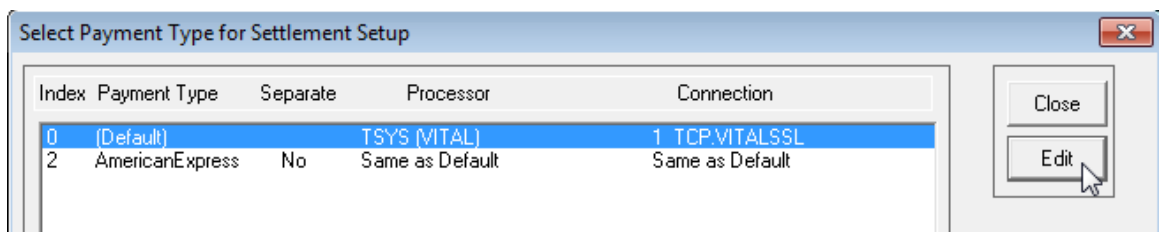
2.2.4 Click Close.



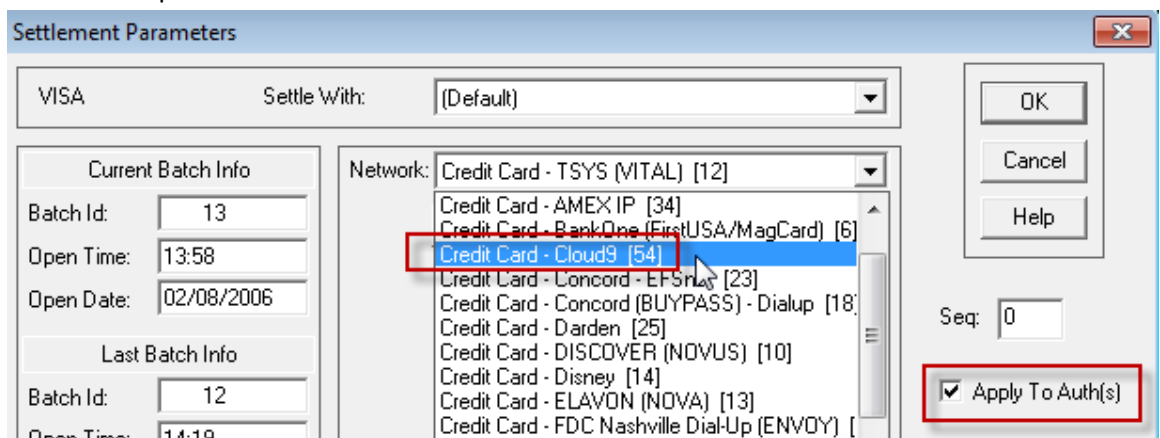
2.2.5 Then navigate to Configuration->Settlement Configuration.



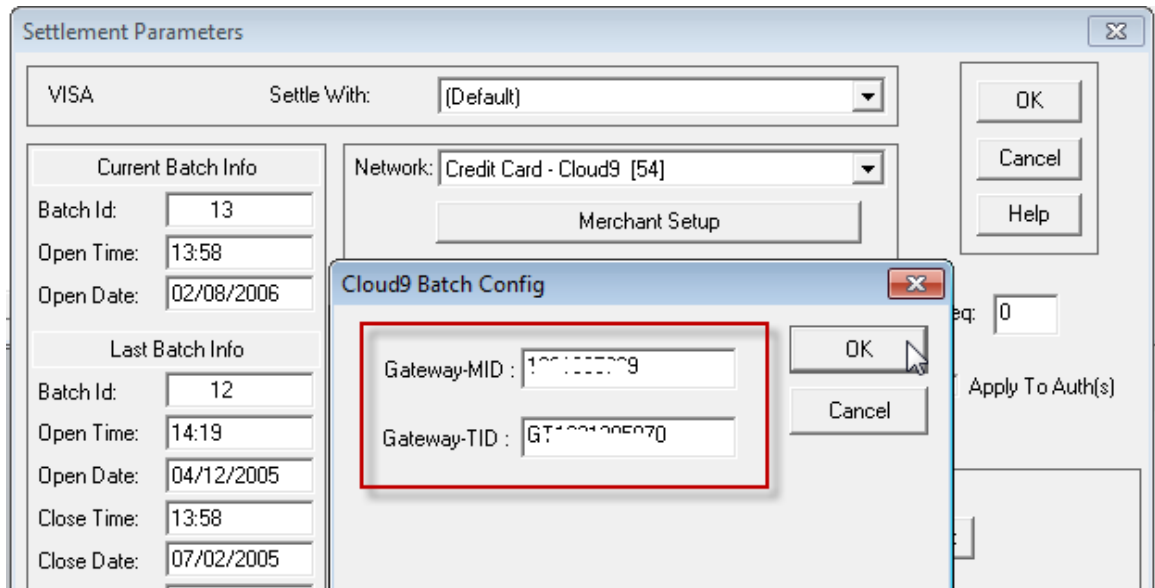
2.2.6 Click Edit



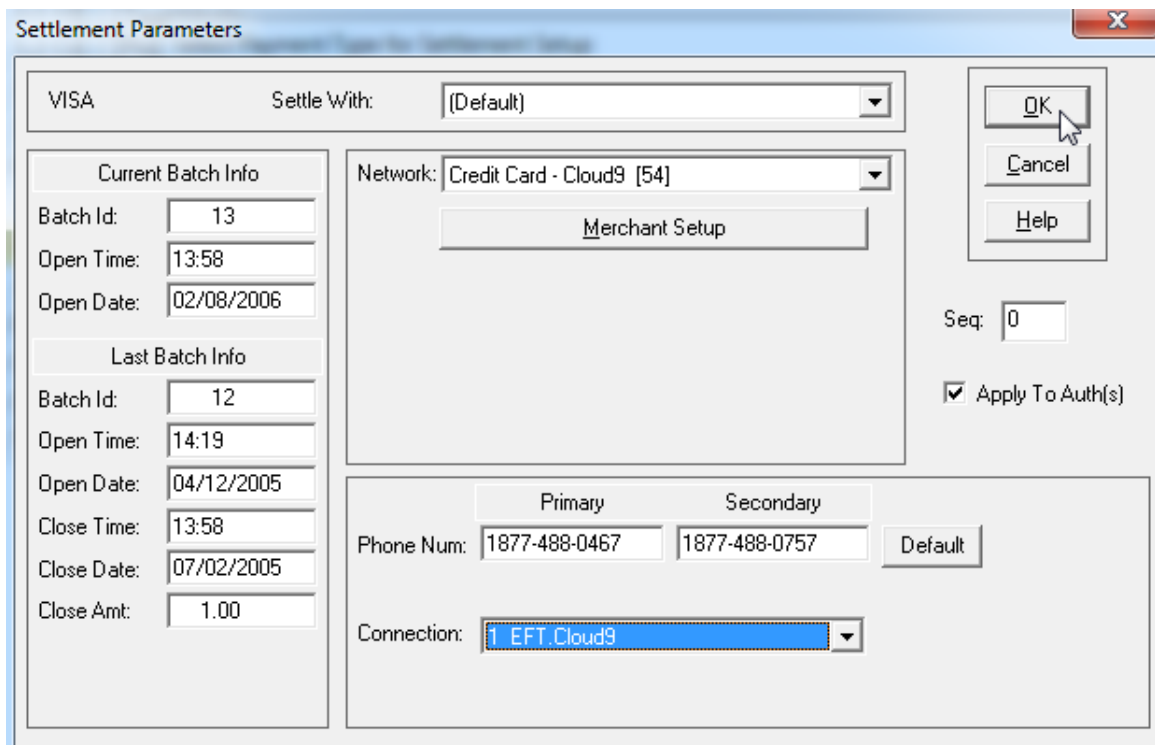
2.2.7 Ensure the Apply to Auth(s) is checked, then select Credit Card-Cloud9 in the Network drop-down box.



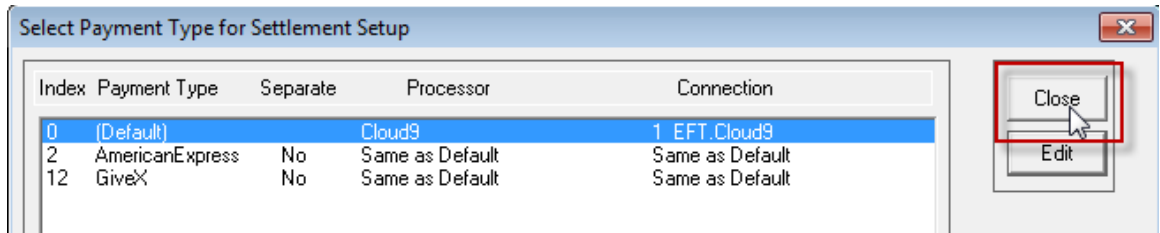
2.2.8 Please enter the Gateway-MID and Gateway-TID recorded in [1.4.11](#) then click OK.



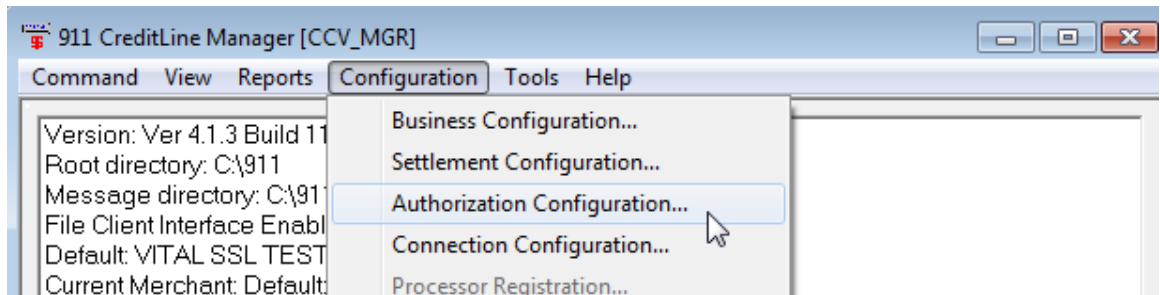
2.2.9 Ensure the Connection is EFT.Cloud9 then click OK.



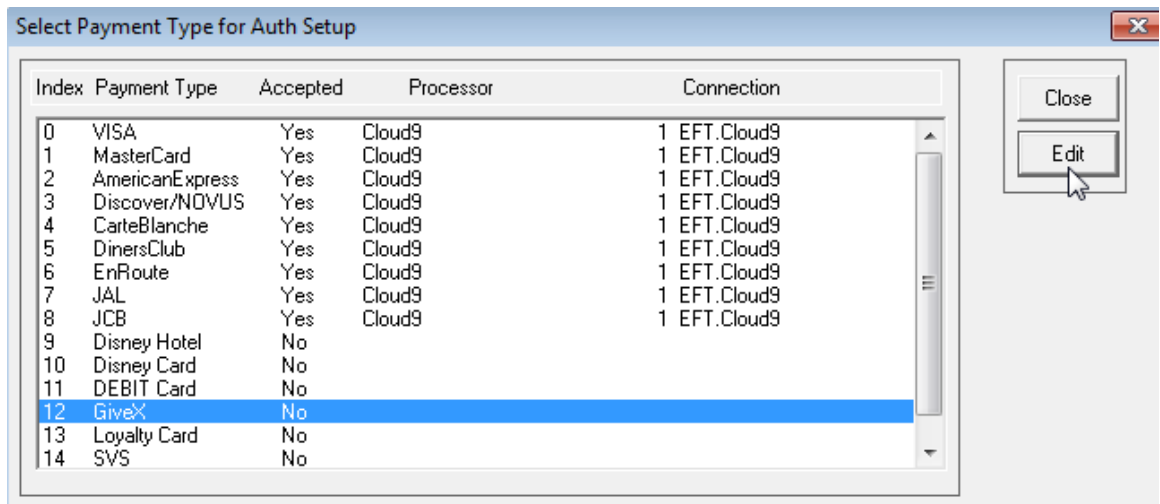
2.2.10 Click Close.



2.2.11 Navigate to Authorization Configuration.



2.2.12 Select Index12 then click Edit.



2.2.13 Please enter the Name, check the Card Is Accepted, input the Card Range and Len then select Gift Card-Cloud9 as Network.

Authorization Parameters

Name: Class:

Card Is Accepted
 Is Default for Class

CardRange:

Low	High
630000	639999

Len:

Code:
 Check LRC
 Ignore Exp Date

Network:

- Debit Card - Chase Debit Canada
- Debit Card - ELAVON (NOVA) Debit
- Debit Card - FDC North (CES) Debit
- Debit Card - HPS Debit
- Debit Card - Moneris eSelect
- Debit Card - Paymentech (GENSAR)
- Debit Card - TSYS (VITAL) Debit
- Debit Card - WorldPay/RBSLynk Det
-
- Gift Card - FDC North Valueback Gift C
- Gift Card - Givex Gift Card
- Gift Card - HPS Gift
- Gift Card - Paymentech Gift Card
- Gift Card - SVS Gift Card - Dialup
- Gift Card - SVS Gift Card - IP
- Gift Card - Valutec Gift Card
- Gift Card - Vantiv/Fifth Third Bank Gil
- Gift Card - WorldPay/RBSLynk Gift
- Loyalty Card - Givex Loyalty

Line Dela: Tip Rate:

Primary Secondary

Phone Num:

Connection:

Apply To All
 No Auth
 No Sale
 No Force
 No Credit
 No Chg Tip
 No Void

2.2.14 Input the Gateway-MID and Gateway-TID record in [1.4.11](#).

Authorization Parameters

Name: Class:

Card Is Accepted
 Is Default for Class

CardRange:

Low	High
630000	639999

Apply To All
 No Auth
 No Sale
 No Force
 No Credit
 No Chg Tip
 No Void

Network:

Cloud9 Auth Config

Gateway-MID :

Gateway-TID :

2.2.15 Ensure the Connection is EFT.Cloud9 then click OK.

Authorization Parameters

Name: More Card
 Class: Gift Card

Card Is Accepted
 Is Default for Class

CardRange:
 Low High
 630000----639999

Modify Add Delete

Len: 19 0 0 0
 Code: GC

Check LRC
 Ignore Exp Date

Network: Gift Card - Cloud9
 Merchant Setup

Line Delay: 5 Floor Limit:
 Tip Rate: Upper Limit: 0.00

Primary Secondary
 Phone Num: Default

Connection: 1 EFT.Cloud9

OK Cancel Help
 Apply To All
 No Auth
 No Sale
 No Force
 No Credit
 No Chg Tip
 No Void

2.2.16 Click Close.

Select Payment Type for Auth Setup

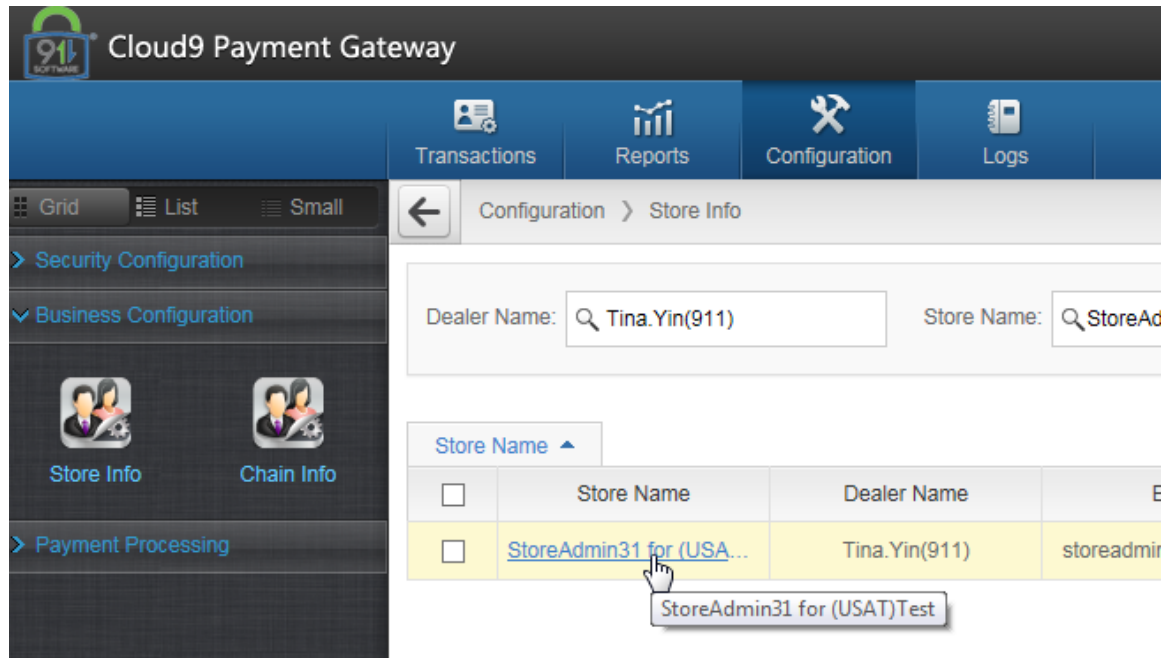
Index	Payment Type	Accepted	Processor	Connection
0	VISA	Yes	Cloud9	1 EFT.Cloud9
1	MasterCard	Yes	Cloud9	1 EFT.Cloud9
2	AmericanExpress	Yes	Cloud9	1 EFT.Cloud9
3	Discover/NOVUS	Yes	Cloud9	1 EFT.Cloud9
4	CarteBlanche	Yes	Cloud9	1 EFT.Cloud9
5	DinersClub	Yes	Cloud9	1 EFT.Cloud9
6	EnRoute	Yes	Cloud9	1 EFT.Cloud9
7	JAL	Yes	Cloud9	1 EFT.Cloud9
8	JCB	Yes	Cloud9	1 EFT.Cloud9
9	Disney Hotel	No		
10	Disney Card	No		
11	DEBIT Card	No		
12	More Card	Yes	Cloud9	1 EFT.Cloud9
13	Loyalty Card	No		

Close Edit

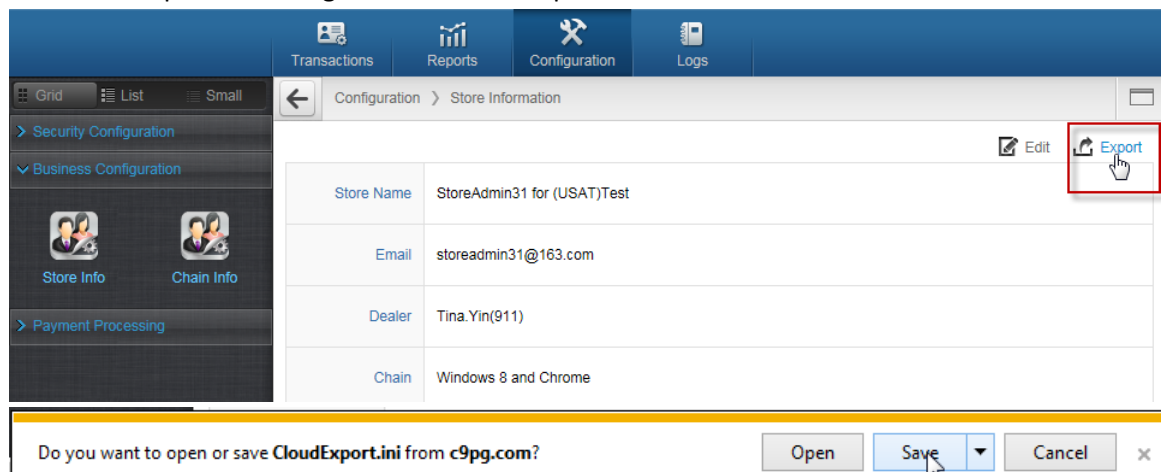
2.3 CreditLine Business Configuration

2.3.1 Logon Cloud9' website as Dealer Admin or Store Admin, then navigate to Configuration->Business Configuration->Store Info.

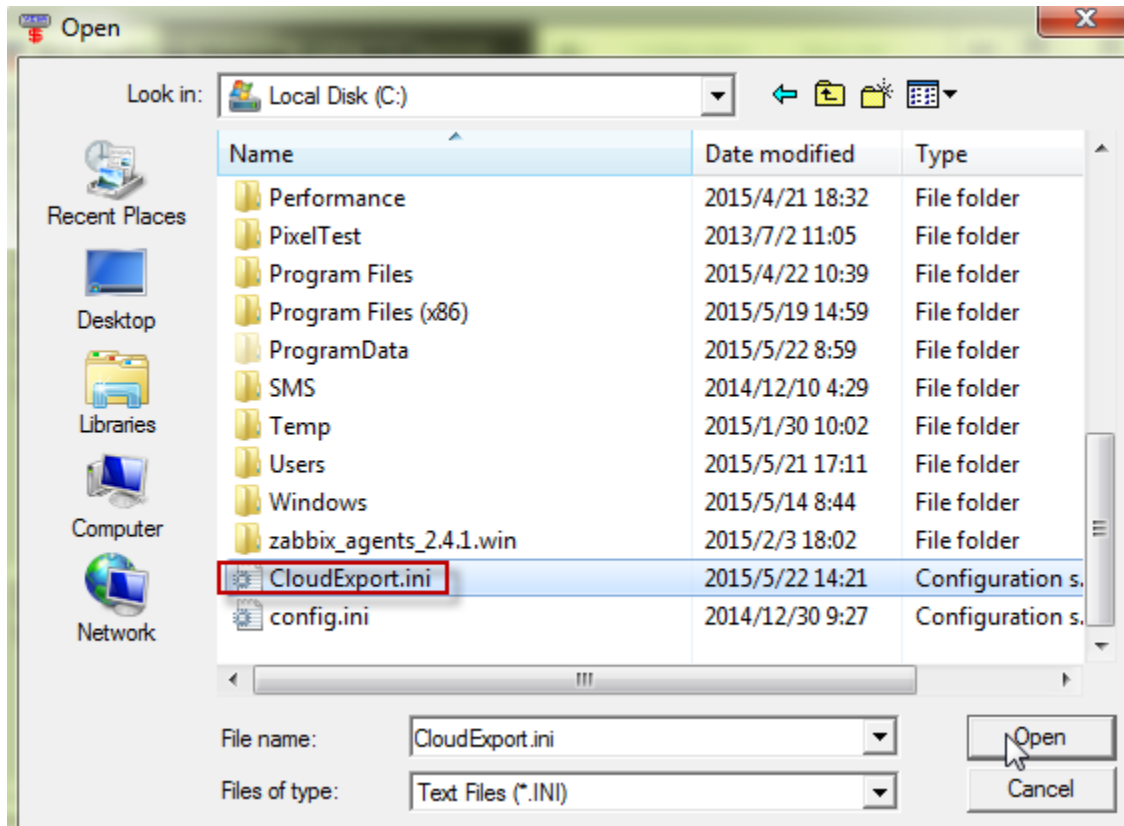
2.3.2 Click the store name.



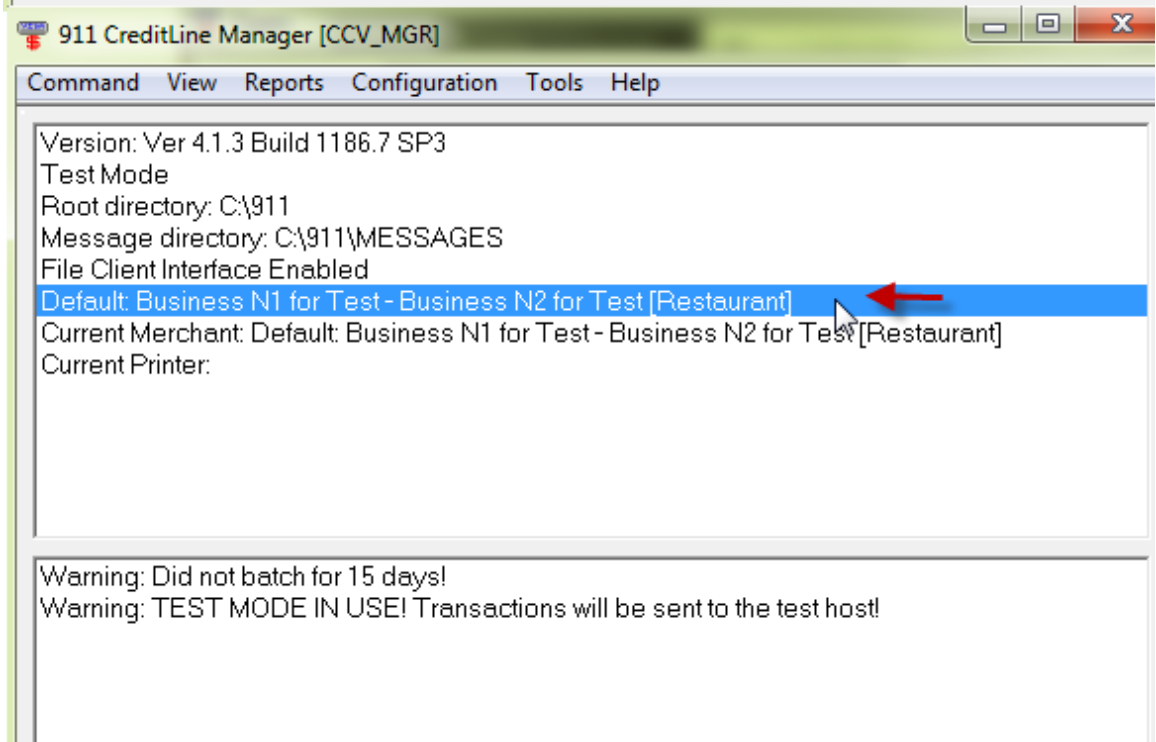
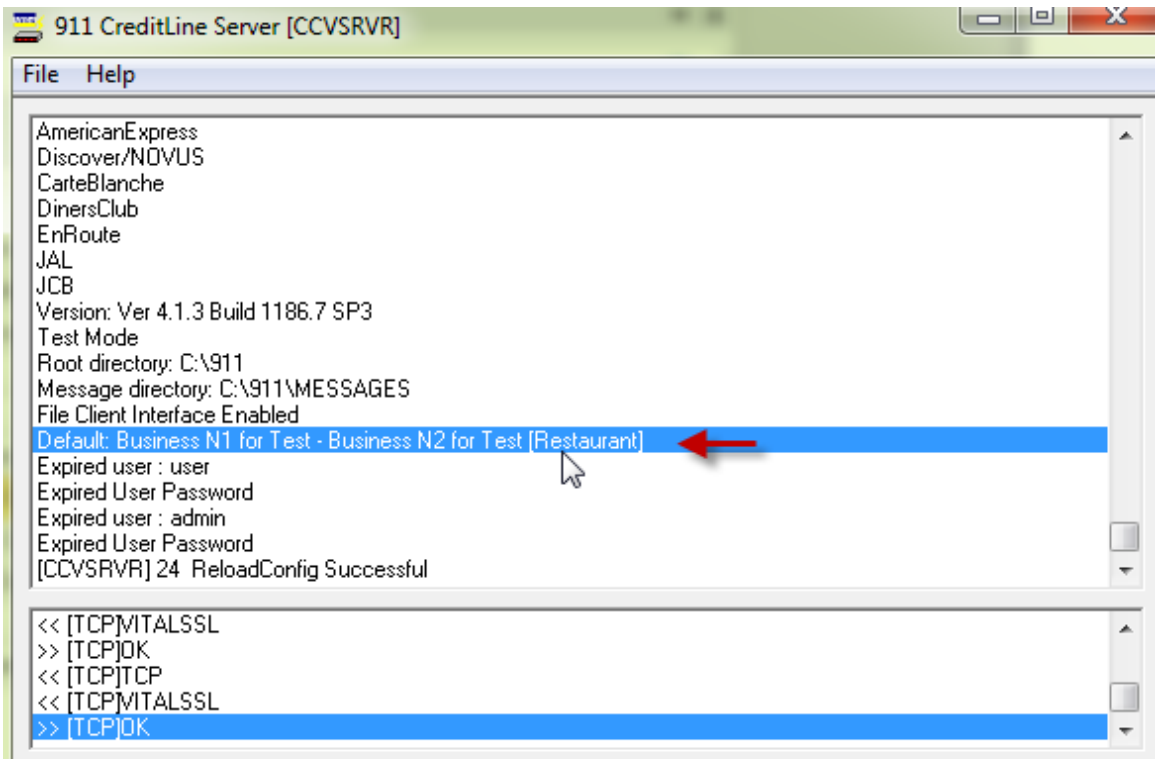
2.3.3 Click Export on the right and save the export file.



2.3.4 Logon CreditLine Manager then click Tools->Import Configuration, then browse the exported file in step 2.3.3 to import the file.



2.3.5 You can see the business info has been updated.



3. Integrate your POS with CreditLine as before.

4. Configure and Run the Cloud9's PDC(Payment Device Controller).

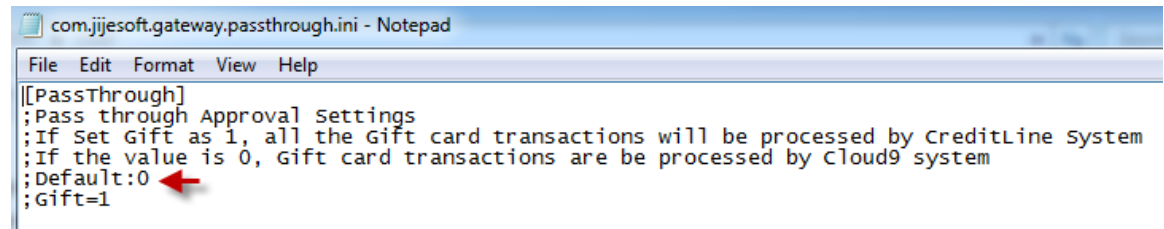
4.1 Please download the latest Cloud9's PDC:

<http://www.911software.com/files/Cloud9/PDC/>

4.2 Copy the install file to the client machine.

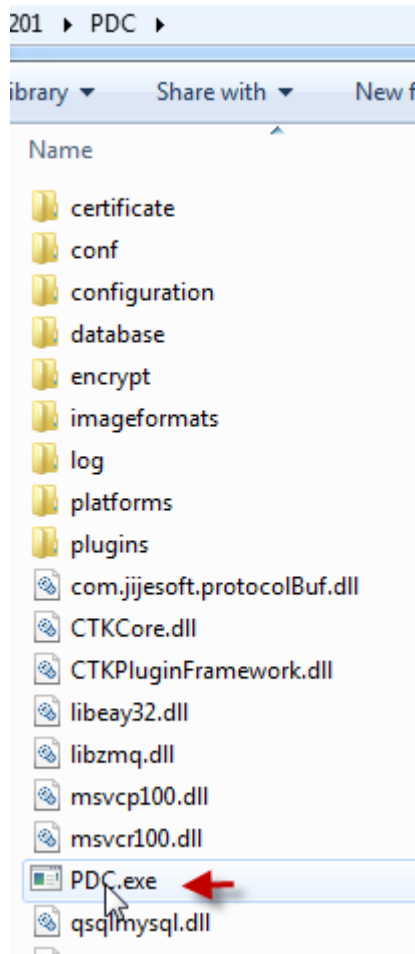
4.3 Double click ... \ PDC\conf\com.jjiesoft.gateway.passthrough.ini

By default the Gift Card setting is 0, and is reserved for future expansion. Please, do not change this setting. (;' in front of the setting means it is commented out and is inactive, the default is enforced).

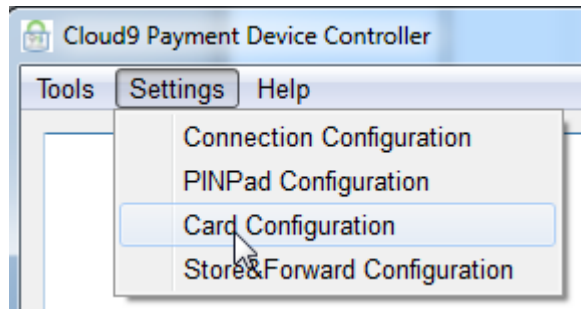


```
com.jjiesoft.gateway.passthrough.ini - Notepad
File Edit Format View Help
[[Passthrough]
;Pass through Approval Settings
;If Set Gift as 1, all the Gift card transactions will be processed by CreditLine system
;If the value is 0, Gift card transactions are be processed by Cloud9 system
;Default:0
;Gift=1
```

4.4 Double click ... \PDC\PDC.exe

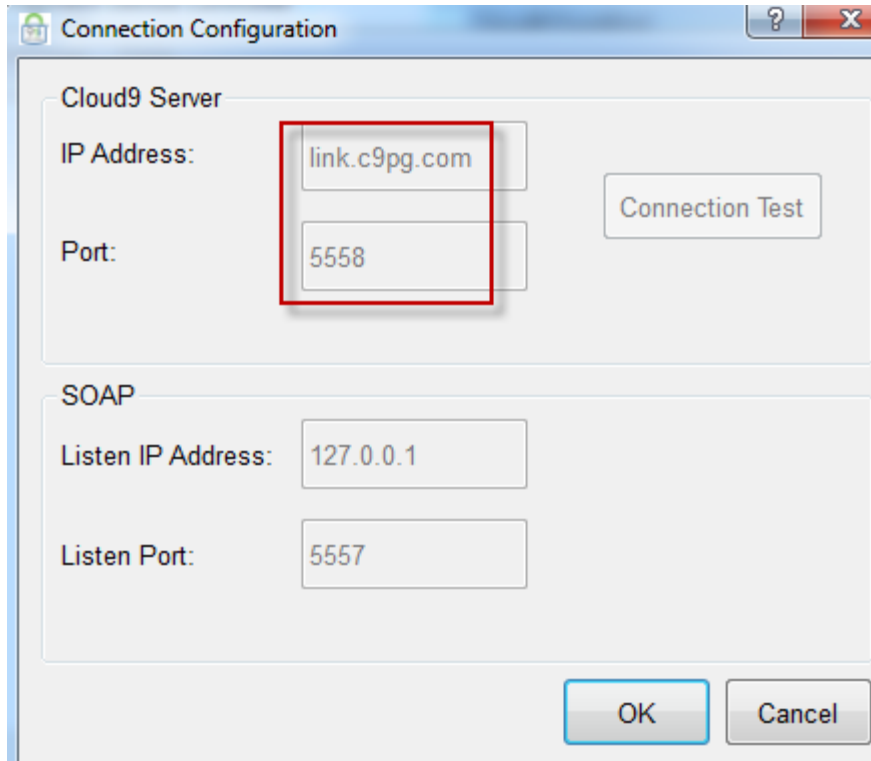


4.5 Configure the Card if you need.



4.6 Ensure Cloud9's PDC is running.

Ensure the PDC's machine can access Cloud9 Server(link.c9pg.com). If you turn on your firewall, please add port 5558 to exception.



Then do some transactions.

5. Check the Report.

Logon Cloud9's website as Dealer admin, Dealer user, Store admin or Store user.

Then navigate to Transactions->Current Transactions to view the transactions in [4.6](#)

The screenshot shows the 'Current Transactions' report in the Cloud9 website. The interface includes a navigation menu with 'Transactions', 'Reports', 'Configuration', 'Logs', and 'Billing'. The report is filtered by Dealer: Tina.Yin(911) and Store: Store11ForTina. The table below shows the transaction details:

Rec#	Trans Type	Card Number	Amount	Total Amount	Auth Code	Auth Time	Entry	Amount	Tip
1	Auth	1006184145	0		Credit Card	411111*****1111	Manual	100.00	0.00
2	Auth	1006182600	0		Credit Card	411111*****1111	Manual	100.00	0.00
3	Auth	1006183521	0		Credit Card	545454*****5454	PROXIMITY	1.00	0.00
4	Sale	1007120158			Credit Card	356600*****0006	Manual	72.91	2.48

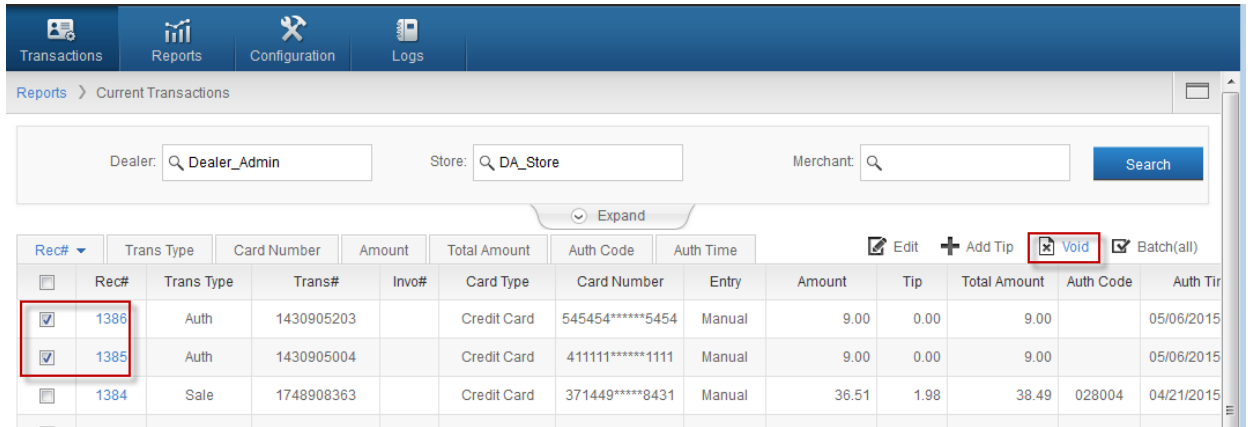
6. The operations of the transactions on website.

Logon Cloud9's website as Store Admin and navigate to Transactions->Current Transactions.

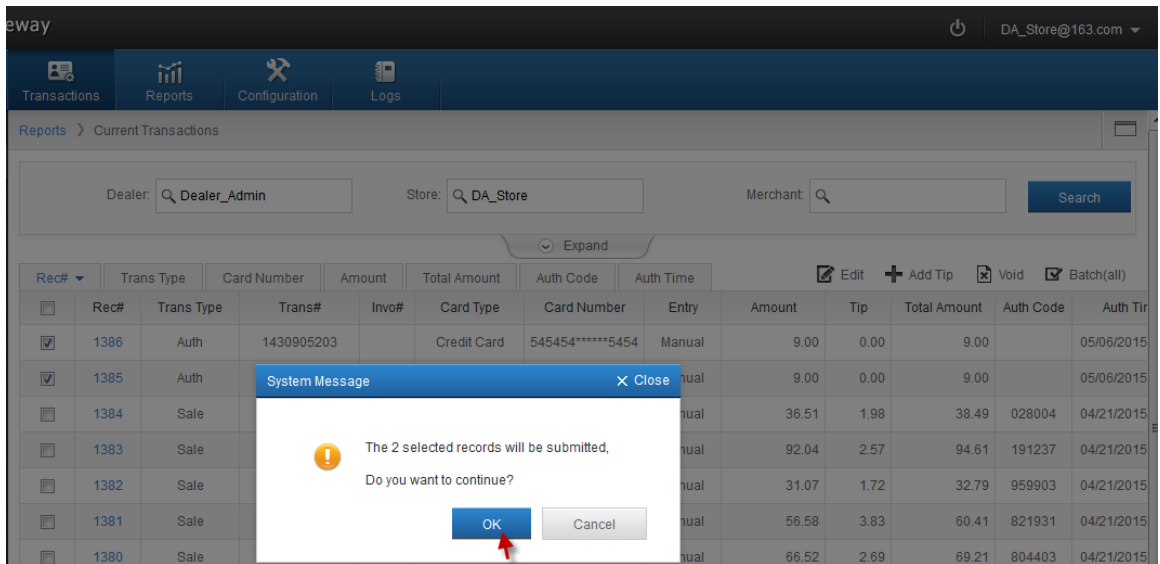
Note: USAT not support “Edit”, “Add Tip”, “Batch” operation, if you click these icon you will get the message “Submit failed.Reason:This kind of transaction is not allowed.

The “Void” operation is supported, the following is the steps to void the transactions:

6.1 Select the transactions you want to void and then click Void on the right.



6.2 Click OK on the popup page.



6.3 If void transactions successfully, you will get the message “Submitted Successfully”.

Submitted Successfully!

14:54:30

- Transactions
- Reports
- Configuration
- Logs

Reports > Current Transactions

Dealer: Dealer_Admin

Store: DA_Store

Merchant:

Search

Expand

Rec#	Trans Type	Card Number	Amount	Total Amount	Auth Code	Auth Time						
<input type="checkbox"/>	1386	Auth(Void)	1430905203		Credit Card	545454*****5454	Manual	9.00	0.00	9.00		05/06/2015
<input type="checkbox"/>	1385	Auth(Void)	1430905004		Credit Card	411111*****1111	Manual	9.00	0.00	9.00		05/06/2015
<input type="checkbox"/>	1384	Sale	1748908363		Credit Card	371449*****8431	Manual	36.51	1.98	38.49	028004	04/21/2015