

# Cloud9 Quick Start Guide

## Revision History

<b>Revision</b>	<b>Date</b>	<b>Change description</b>
1.0	07/24/2014	Initial Draft
1.1	09/17/2014	Simply the setting steps

# Table of Contents

1. About this Guide .....	4
2. PIN pad Configuration.....	4
3. Merchant Information Configuration.....	4
4. POS system Development .....	5

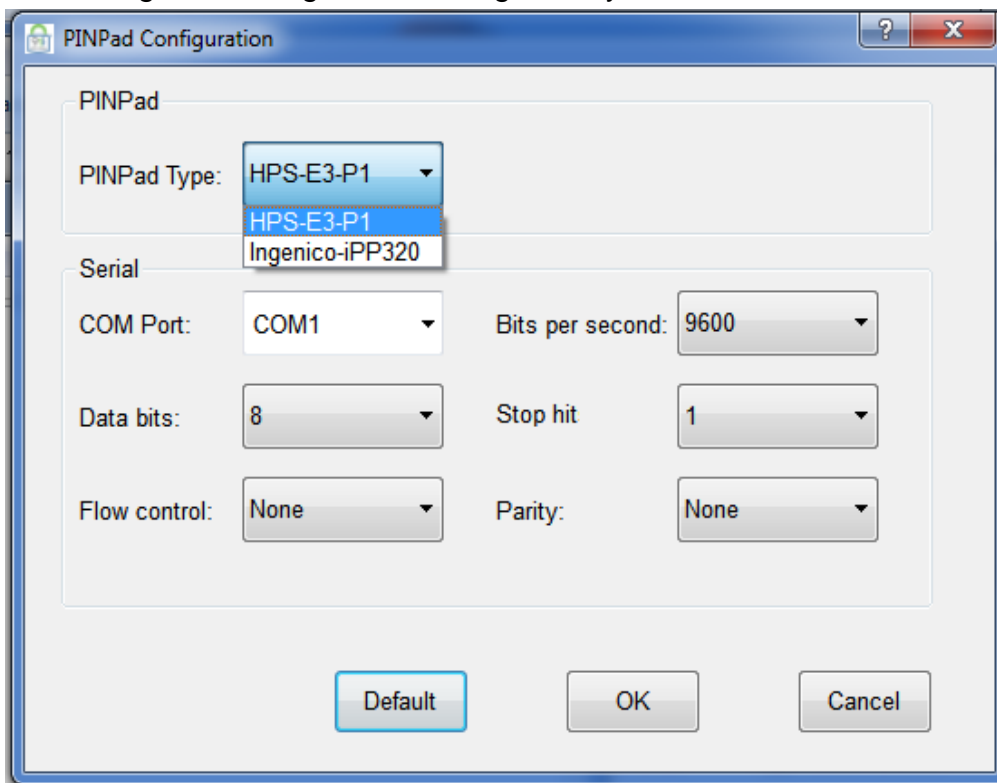
## 1. About this Guide

This Guide is created for users who use Cloud9 for the first time, and you need to set up necessary configuration first.

## 2. PIN pad Configuration

Before you start to deploy PIN pad, you need a PIN pad and install the corresponding PIN pad driver. Please refer to the PIN pad installation Guide, "PP790SE USB Driver User Guide.pdf". If you have installed PIN pad Drive correctly, you can start to set up PIN pad configuration.

- a. Click **Settings->PINPad Configuration**
- b. Select **PIN pad Type** you will deploy, and then configure the other settings according to the setting when you install the driver.

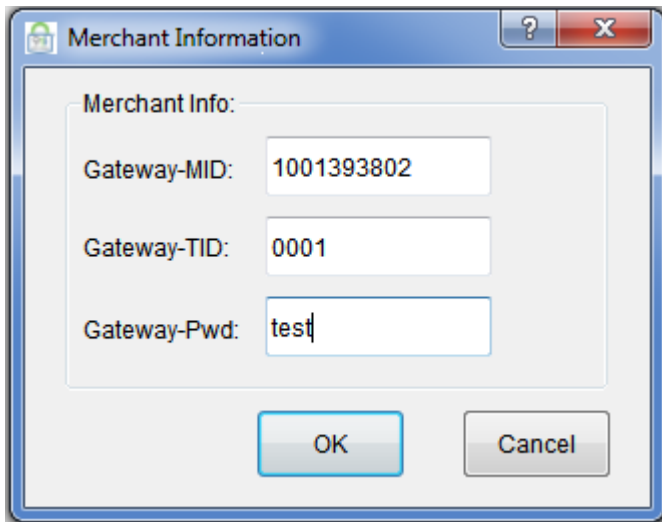


## 3. Merchant Information Configuration

Before you start configuring, you need to register an account in our system through website. The account used for test is below:

Gateway-MID: 1001394636  
Gateway TID: GT1001394637  
Gateway-PWD: test123!@#

- a. Click **Settings->Merchant Setting**.
- b. Fill out configuration. Click **OK** to confirm.



#### 4. POS system Development

The protocol between POS and FrontEnd is SOAP. This interface is described by a WSDL file. SOAP client code can be auto generated by gSoap tool.

The steps to generate code are below:

- a. Go to <http://www.cs.fsu.edu/~engelen/soap.html>.
- b. Download and install gSoap in "c:\\" or another path.
- c. Copy the WSDL file to the gSoap install path, "c:\gsoap-2.8\gsoap\bin\win32".
- d. Open a console and input "c:\gsoap-2.8\gsoap\bin\win32".
- e. Execute this command, "wsdl2h.exe PosGatewayService.wsdl", then you will get a file named "PosGatewayService.h".
- f. Execute "soapcpp2.exe -I./../import -C -L -x PosGatewayService.h" and get 5 files, "PosGatewayInterface.nsmapi", "soapC.cpp", "soapClient.cpp", "soapH.h", "soapStub.h".
- g. Copy the two files, "stdsoap2.cpp" and "stdsoap2.h" in the folder "C:\gsoap-2.8\gsoap" and the five files you get above to your project. We provide a sample in c++ to help you to develop POS system, please refer to it.